



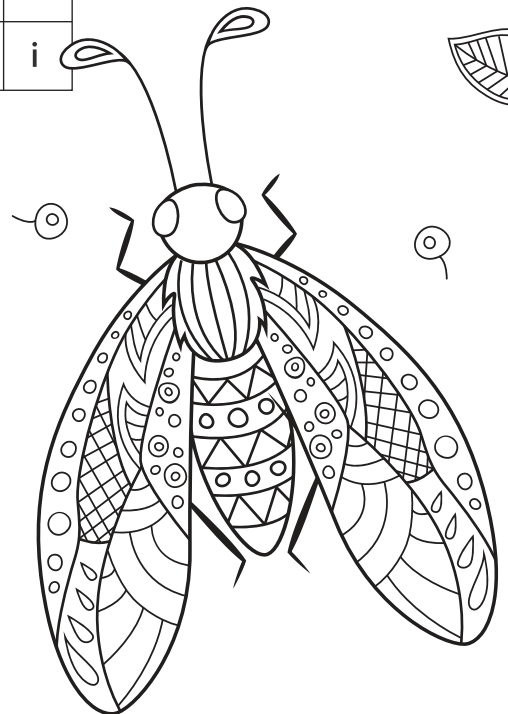
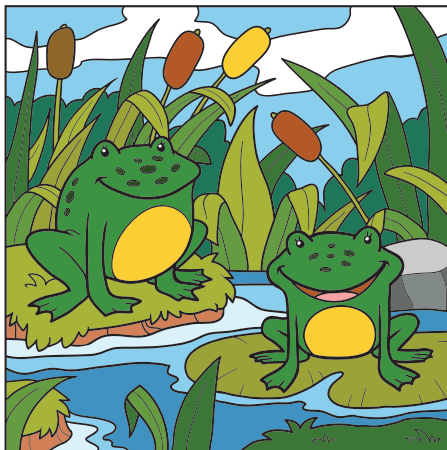
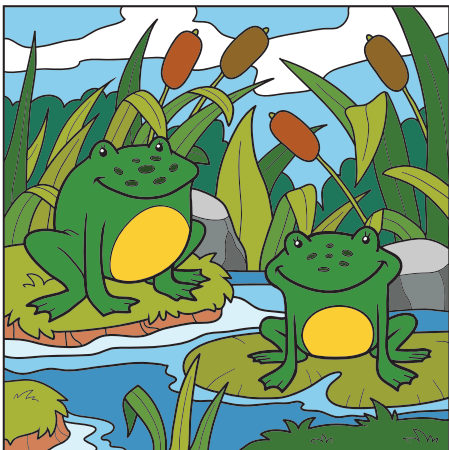
## Wordsearch

r	s	d	e	y	q	h	i	h	b	d	t	e	h	p
o	y	e	x	q	t	r	e	e	n	m	s	p	a	g
n	v	l	i	z	a	r	d	a	d	r	f	y	b	r
w	a	t	e	r	u	f	l	r	o	j	l	r	i	a
j	n	b	s	t	n	m	i	g	d	f	o	l	t	s
r	p	m	a	r	r	b	v	r	r	y	w	d	a	s
b	p	n	y	a	f	q	i	e	x	w	e	z	t	f
u	r	a	f	r	c	b	t	e	s	z	r	l	a	s
g	e	o	e	f	y	t	f	c	t	b	n	i	t	a
m	s	e	g	d	u	i	l	s	k	y	w	l	n	n
s	e	a	a	b	l	w	o	o	d	l	a	n	d	d
h	r	l	r	d	t	y	y	y	p	z	j	z	c	b
e	v	x	l	g	i	h	p	r	o	t	e	c	t	f
p	e	i	q	g	z	p	p	p	n	c	o	a	s	t
k	w	p	b	b	h	q	b	h	d	y	a	a	g	i

- Bird
- Bug
- Butterfly
- Coast
- Farmland
- Flower
- Gorse
- Grass
- Habitat
- Ladybird
- Lizard
- Nature
- Pond
- Preserve
- Protect
- Sand
- Sea
- Sky
- Tree
- Water
- Wildlife



## Find 10 differences





## Unscramble Puzzle

There are lots of types of habitat found in the Park including heathland, gorseland, sand dunes, reed beds, meadow, marsh, pond, reservoir, gardens, coastline, woodland, farmland, wetland, offshore reefs and coastal cliffs.

Unscramble these letters to find four habitats.



ALIEN COST      A   S    L   I  

HARMS         A    S  

DANGERS       A    D     S

OWL ON DAD      D    A    D

## See if anyone can work out the names of these butterflies which are all found in Jersey!

What name is the same for a butterfly and a bird with a very colourful tail?

**Peacock!**

What butterfly name sounds like a short policeman?

**Small copper!**

What butterfly uses a lot of makeup?

**A Painted lady!**

What little butterfly captains a boat?

**A Small skipper!**

